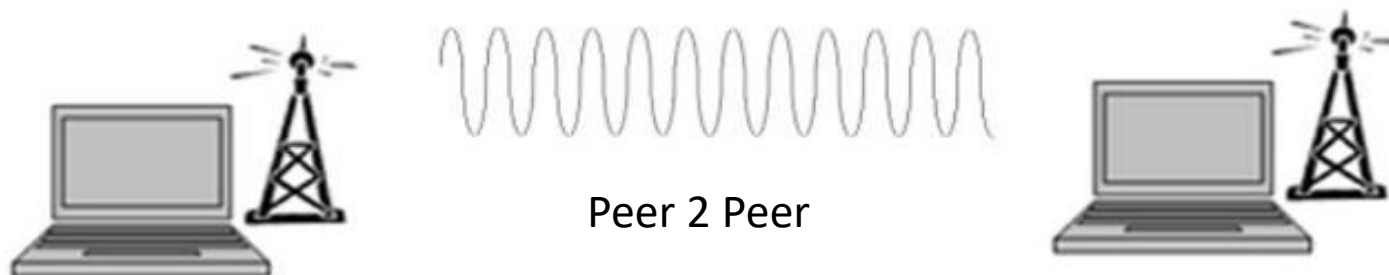


WINLINK P2P

Updated April 16, 2025



Winlink Peer to Peer

Winlink Peer – to – Peer (Radio only operation {P2P})

- Peer – to – Peer: direct radio communications between end-users.
- The internet is not used, all communication by radio.
- Only two client stations are involved.
- 100% error free transmission and file attachments.

Winlink Peer to Peer

Peer – to – Peer

- A method for Winlink express users to exchange messages via radio with each other directly without using the internet.
- This is one – on – one; no cc's
- Winlink express stations can interact with each other using packet, pactor, vara fm, or vara hf.
- Could be labelled as PTP or P2P.

Winlink Peer to Peer

- Peer – to -- Peer is useful when direct contact is available between stations.
- A digi can be used.
- Lessens traffic on the winlink servers.



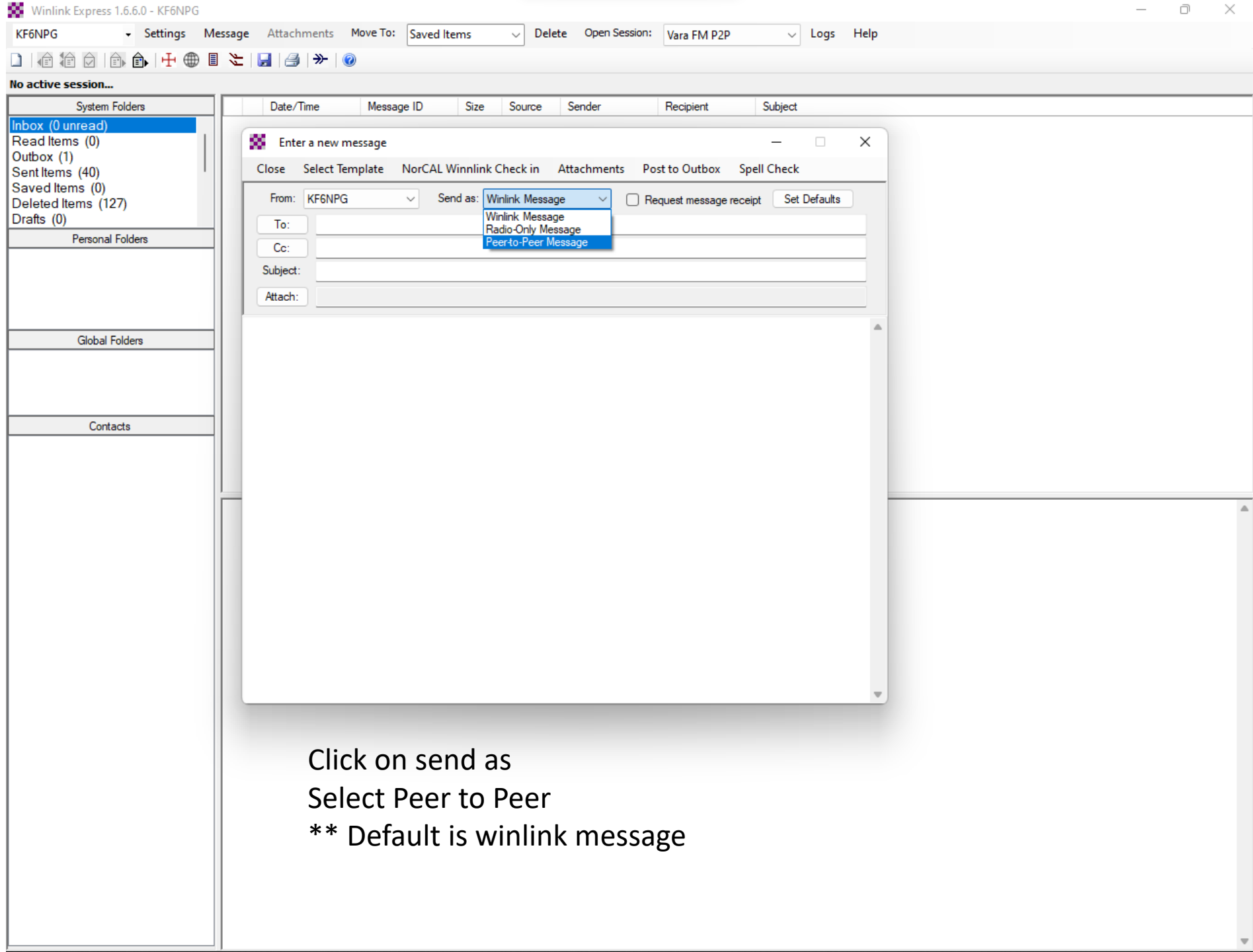
No active session...

- System Folders
 - Inbox (0 unread)
 - Read Items (0)
 - Outbox (1)
 - Sent Items (40)
 - Saved Items (0)
 - Deleted Items (127)
 - Drafts (0)
- Personal Folders
- Global Folders
- Contacts

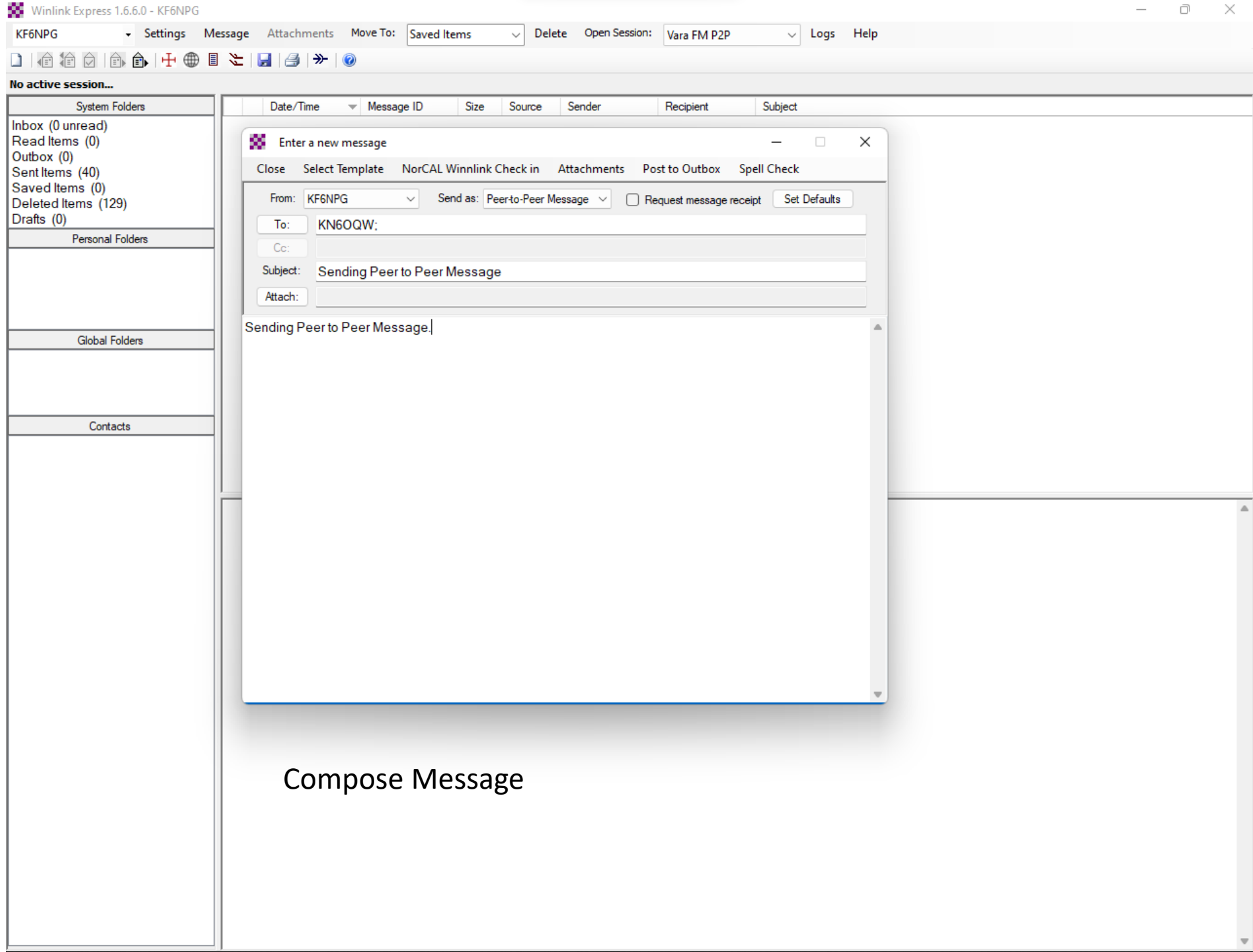
- New Message...
- Reply...
- Reply to All...
- Forward...
- Forward without change...
- Acknowledge receipt...
- Save message as...
- Edit...
- Template manager...
- Template settings...
- Set favorite templates...
- HTML Forms
- Generate ICS-309 Communication Log
- Generate maps and CSV files for forms
- Export messages
- Import messages
- Archive messages

Size	Source	Sender	Recipient	Subject
------	--------	--------	-----------	---------

Open Winlink
Click on message
Select new message



Click on send as
Select Peer to Peer
** Default is winlink message



KF6NPG

Settings

Message

Attachments

Move To:

Saved Items

Delete

Open Session:

Vara FM P2P

Logs

Help

No active session...

- System Folders
 - Inbox (0 unread)
 - Read Items (0)
 - Outbox (0)
 - Sent Items (40)
 - Saved Items (0)
 - Deleted Items (129)
 - Drafts (0)
- Personal Folders
- Global Folders
- Contacts

Date/Time	Message ID	Size	Source	Sender	Recipient	Subject
-----------	------------	------	--------	--------	-----------	---------

Enter a new message

Close Select Template NorCAL Winnlink Check in Attachments Post to Outbox Spell Check

From: KF6NPG Send as: Peer-to-Peer Message Request message receipt Set Defaults

To: KN6OQW:

Cc:

Subject: Sending Peer to Peer Message

Attach:

Sending Peer to Peer Message|

Compose Message



No active session...

- System Folders
 - Inbox (0 unread)
 - Read Items (0)
 - Outbox (0)
 - Sent Items (40)
 - Saved Items (0)
 - Deleted Items (129)
 - Drafts (0)
- Personal Folders
- Global Folders
- Contacts

Date/Time	Message ID	Size	Source	Sender	Recipient	Subject
-----------	------------	------	--------	--------	-----------	---------

Enter a new message

Close Select Template NorCAL Winnlink Check in Attachments **Post to Outbox** Spell Check

From: KF6NPG Send as: Peerto-Peer Message Request message receipt Set Defaults

To: KN6OQW:

Cc:

Subject: Sending Peer to Peer Message

Attach:

Sending Peer to Peer Message|

Post to Outbox

Winlink Express 1.6.6.0 - KF6NPG

KF6NPG Settings Message Attachments Move To: Saved Items Delete Open Session: Vara FM P2P Logs Help

No active session...

	Date/Time	Message ID	Size	Source	Sender	Recipient	Subject
	2022/07/12 18:41	A6SAO8ETVL7N	191	KF6NPG	KF6NPG	KN6OQW (P2P)	Sending Peer to Peer Message

System Folders

- Inbox (0 unread)
- Read Items (0)
- Outbox (1)
- Sent Items (40)
- Saved Items (0)
- Deleted Items (129)
- Drafts (0)

Personal Folders

Global Folders

Contacts

```

Message ID: A6SAO8ETVL7N
Date: 2022/07/12 18:41
From: KF6NPG
To: KN6OQW
Source: KF6NPG
P2P: True
Subject: Sending Peer to Peer Message

Sending Peer to Peer Message.

```

What posted message looks like in your outbox

Winlink Express 1.6.6.0 - KF6NPG

KF6NPG Settings Message Attachments Move To: Saved Items Delete Open Session: Vara FM P2P Logs Help

No active session...

	Date/Time	Message ID	Size	Source	Sender
	2022/07/12 18:41	A6SAO8ETVL7N	191	KF6NPG	KF6NPG

System Folders

- Inbox (0 unread)
- Read Items (0)
- Outbox (1)
- Sent Items (40)
- Saved Items (0)
- Deleted Items (129)
- Drafts (0)

Personal Folders

Global Folders

Contacts

Peer to Peer Message

- Vara FM P2P
- Ardop Winlink
- Vara HF Winlink
- Vara FM Winlink
- Iridium GO Winlink
-
- Packet P2P
- Pactor P2P
- Robust Packet P2P
- Ardop P2P
- Vara HF P2P
- Vara FM P2P**
- Telnet P2P
-
- Pactor Radio-only
- Vara HF Radio-only
- Vara FM Radio-only
- Telnet Radio-only
-
- Telnet Post Office

Message ID: A6SAO8ETVL7N
 Date: 2022/07/12 18:41
 From: KF6NPG
 To: KN6OQW
 Source: KF6NPG
 P2P: True
 Subject: Sending Peer to Peer Message

Sending Peer to Peer Message.

In the open session box select your Peer to Peer choice. In this instance both the sending and receiving station must be in the same Peer to Peer session. For example, in this instance both stations must be in Vara FM P2P.

Winlink Express 1.6.6.0 - KF6NPG

KF6NPG Settings Message Attachments Move To: Saved Items Delete Open Session: Vara FM P2P Logs Help

In Vara FM P2P session.

	Date/Time	Message ID	Size	Source	Sender	Recipient	Subject
	2022/07/12 18:41	A6SAO8ETVL7N	191	KF6NPG	KF6NPG	KN6OQW (P2P)	Sending Peer to Peer Message

System Folders

- Inbox (0 unread)
- Read Items (0)
- Outbox (1)
- Sent Items (40)
- Saved Items (0)
- Deleted Items (129)
- Drafts (0)

Personal Folders

Global Folders

Contacts

Vara FM Peer-to-Peer Session - KF6NPG

Exit Settings Switch to Winlink Session Channel Selection Start Stop Abort

Connection: Direct via , Freq.: Range:

Favorites: Select Add to favorites

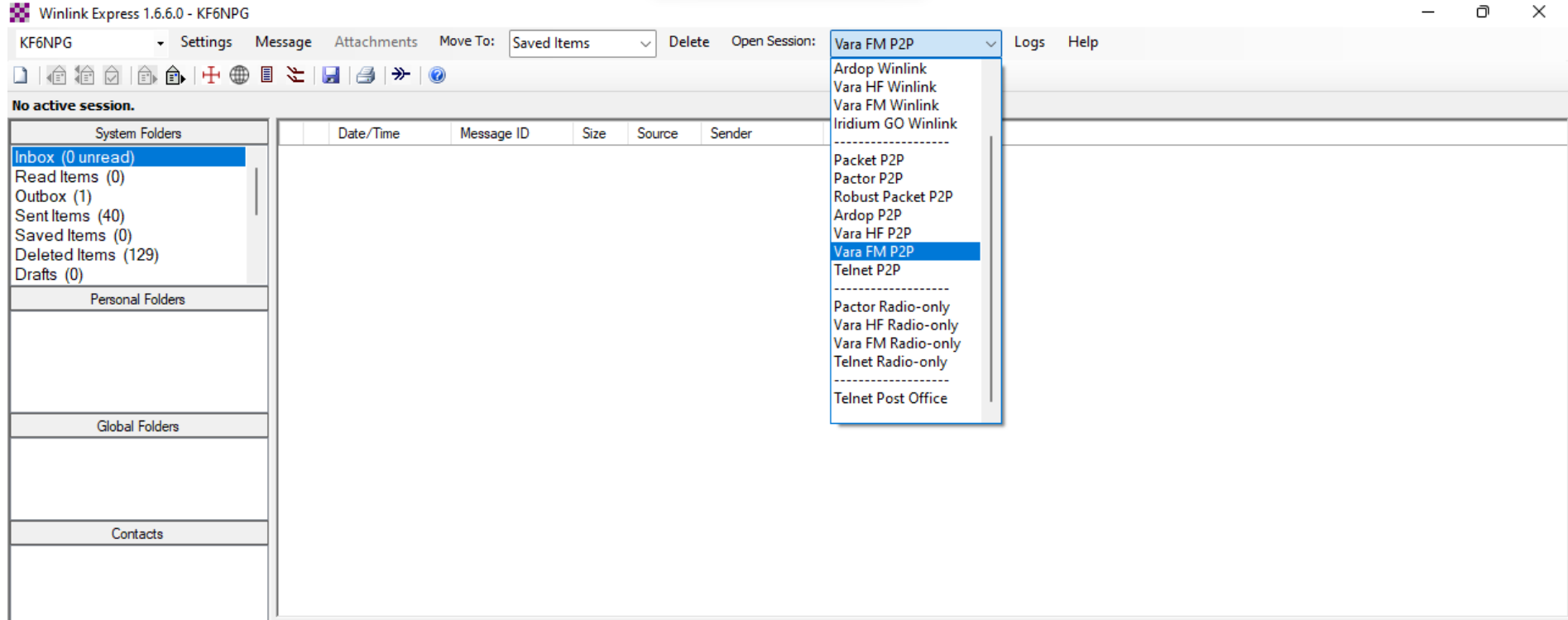
In: 0/0 Out: 0/0 BPM: 0/0 Disconnected/Listening Time to next Autoconnect = Disabled

*** Launching VARA FM TNC: C:\VARA FM\VaraFM.exe
 *** Successfully connected to VARA FM TNC.
 *** Ready
 *** Peer-to-peer session

Message ID: A6SAO8ETVL7N
 Date: 2022/07/12 18:41
 From: KF6NPG
 To: KN6OQW
 Source: KF6NPG
 P2P: True
 Subject: Sending Peer to Peer Message

Sending Peer to Peer Message.

Open your Peer to Peer session box. Type in the call sign you are sending your message to. Remember both stations must be in the same Peer to peer session. Click on start to send message. **Both station radios must be on the same simplex frequency and the proper winlink session.



Receiving station
Open Winlink
Click in the box next to the open session box
Select your P2P choice
In this example we have selected Vara FM P2P

Winlink Express 1.6.6.0 - KF6NPG

KF6NPG Settings Message Attachments Move To: Saved Items Delete Open Session: Vara FM P2P Logs Help

In Vara FM P2P session.

Date/Time	Message ID	Size	Source	Sender	Recipient	Subject
-----------	------------	------	--------	--------	-----------	---------

System Folders

- Inbox (0 unread)
- Read Items (0)
- Outbox (1)
- Sent Items (40)
- Saved Items (0)
- Deleted Items (129)
- Drafts (0)

Personal Folders

Global Folders

Contacts

Vara FM Peer-to-Peer Session - KF6NPG

Exit Settings Switch to Winlink Session Channel Selection **Start** Stop **Abort**

Connection: Direct via Freq.: 0.000 Range:

Favorites: Select Add to favorites

In: 0/0 Out: 0/0 BPM: 0/0 Disconnected/Listening Time to next Autoconnect = Disabled

*** Launching VARA FM TNC: C:\VARA FM\VaraFM.exe
*** Successfully connected to VARA FM TNC.
*** Ready
*** Peer-to-peer session

Click on open session and this screen appears. The receiving station is now ready to receive a Vara FM P2P message. You do not need to type in a particular station. In this mode you will receive any P2P sent to your station.

****Both station radios must be on the same simplex frequency and the proper winlink session.**

Key Points to remember:

- ❖ Both Stations must be on the same simplex frequency
- ❖ A digipeater can be used if needed
- ❖ Both stations must be in the same winlink session (packet, pactor, vara fm or vara hf)
- ❖ Both sending and receiving station must be in session before the message is sent
- ❖ No cc's